



DATATEL OVERVIEW

datatel is global leader in special instrumentation technology and has been committed to their ever-increasing expertise since 1976. Where top performance is required, datatel telemetry systems create the innovative link between sensors and data acquisition. During operation, datatel's systems read physical measurement data and provide contactless transmission from rotating machinery and vehicle components.

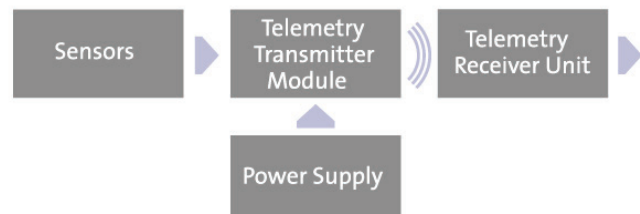
A COMPLETE SOLUTION

APEX's exclusive telemetry provider and European reseller, datatel Telemetry provides special instrumentation technology, linking sensors and data acquisition. datatel combines thorough design, precise manufacturing and installation to provide reliable, flexible, and innovative solutions to complex measurement problems. Their custom-tailored products are continually developed and geared to their user's evolving needs and provide test engineers with reliable data even in the most difficult operational conditions.

APEX and datatel's partnership includes APEX's newest data acquisition and analysis software DX+ with all datatel receivers and transmitters, giving customers access to a complete turnkey solution for data acquisition and post-test data playback with unprecedented expandability.

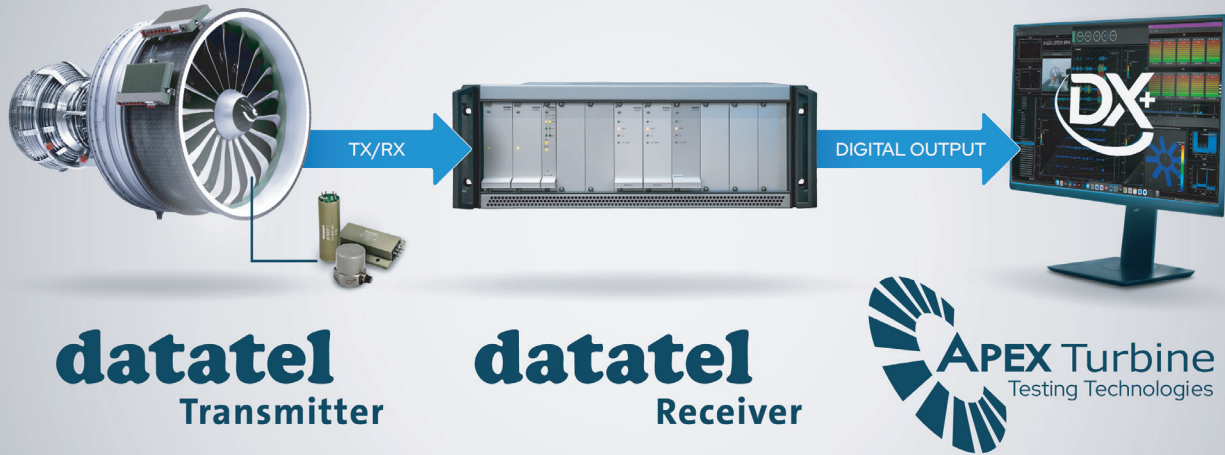
DATATEL PRODUCT FEATURES AT A GLANCE

- Contactless transmission of data and power
- Robust, field-tested and reliable technology
- Turnkey system approach to ensure convenient commissioning and handling
- Single and multi-channel technology, several hundred measurement channels possible
- Direct connection of sensors (e.g. strain gages, thermocouples, RTD, pressure sensors, ICP and piezoelectric sensors etc.)
- Can be used in extreme ambient conditions (operating temperature range - 40 to + 125°C, g-load up to 150,000g, oil and moisture resistant)
- High signal bandwidth per channel, up to 96kHz (-3dB)
- Synchronous data transmission
- High level of measurement accuracy and signal quality
- Remotely controlled telemetry transmitters with integrated diagnostic functions
- Miniaturized telemetry transmitter modules
- Rotating electronic components enclosed in robust metal housings, resistant to ambient influences
- Telemetry receivers in modular 19" technology or compact types for mobile applications
- Standardized analog or digital signal outputs
- External data acquisition systems can be connected directly
- Dual power supply concept, inductive power supply or alternatively by battery
- Significant relative motion option between the rotor and stator without impairing the measured data



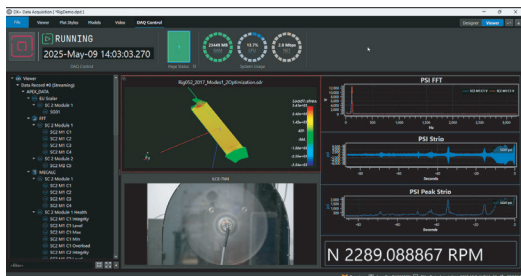
A BETTER WAY TO TEST ROTORS

Through a direct partnership, datatel and APEX Turbine Testing Technologies create a seamless pipeline from instrumentation to DAQ. Utilizing an intuitive single-click setup interface, APEX DX+ processes, records, and visualizes data from datatel's cutting edge telemetry devices. DX+ is included FREE with every datatel transmitter/receiver unit, enabling immediate use and engineering success.



DX+ OVERVIEW

APEX DX+ is a fully featured Test, Measurement, Analysis, and Reporting tool for use in a variety of High-Performance test industries including Aerospace, Power Generation, MRO, Acoustics, and more. Employing a modular design, DX+ allows deployment to a wide range of testing scenarios. All data entering the DX+ system is time aligned and then processed, published, or stored to databases - fusing any measurement regardless of the source. This allows organizations to unify their tech stack, fusing dynamic high sample rate data, low sample rate data, metadata, and digital physical models into a single ecosystem.



DX+ AT A GLANCE

- **Integrated Measurements** – Test, measure, analyze, and report data from diverse sources and sample rates in one unified platform.
- **Database Recording** – Securely record, query, distribute, and process data using high-efficiency databases.
- **Custom Processing** – Run custom Matlab and Python scripts within the DX+ microservice pipeline
- **Advanced Analysis** – Use built-in tools for spectral, order, audio, model fit, and more.
- **One-Click Hardware Setup** – Instantly pull configurations from hardware—no duplication, no hassle.
- **User-Friendly Interface** – Quickly build test setups, dashboards, and reports with intuitive tools.
- **Fast, Interactive Plotting** – Drag-and-drop high-quality, interactive engineering diagrams.
- **Integrated Video** – Sync high-speed or schlieren video with key test data.
- **Real-Time 3D Modeling** – Visualize live data on interactive 3D physical models with color mapping and fit tools.