



## SCANIVALVE OVERVIEW

Scanivalve is recognized as the world's leading supplier of state-of-the-art Intelligent Pressure and Temperature instrumentation, providing innovative measurement solutions to their customers since 1955. Systems totaling 1,500,000 channels have been delivered worldwide. With a proven record of delivering reliable products, APEX trusts Scanivalve to deliver high-channel-counts on-time and at a great price.

## DSA5000

The all new DSA5000 is the latest advancement to our DSA series scanners. Several improvements and features have been designed to make the DSA5000 the forefront of pressure measurement devices. Please visit the DSA5000's webpage for all detailed information on this one-of-a-kind pressure scanner.



## MPS4000

The MPS4000 series is a powerful high-channel count pressure scanner with many features, packed into a small footprint. The MPS series was designed for wind tunnel, automotive, flight test, and many other applications.

APEX has integrated MPS4200 series and DSA5000 series scanners into their DX+ software package.



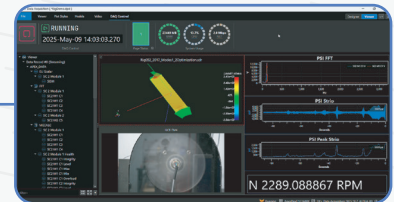
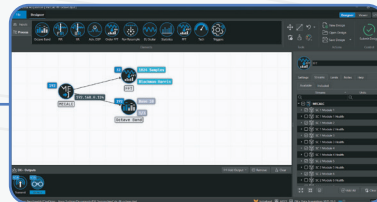
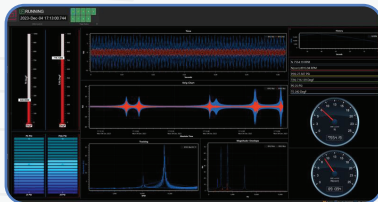
## SCANIVALVE PRODUCT APPLICATIONS

Scanivalve products are versatile and have applications in many industries.

- Gas Turbine Performance Test
- Wind Tunnel Test
- Flight Test
- Wind Engineering
- Power Industry – Wind Turbine Test
- Power Industry – Gas & Steam Turbines
- Automotive & Race Cars
- Industrial Pressure and Temperature Measurement

## DX+ OVERVIEW

APEX DX+ is a fully featured Test, Measurement, Analysis, and Reporting tool for use in a variety of High-Performance test industries including Aerospace, Power Generation, MRO, Acoustics, and more. Employing a modular design, DX+ allows deployment to a wide range of testing scenarios. All data entering the DX+ system is time aligned and then processed, published, or stored to databases – fusing any measurement regardless of the source. This allows organizations to unify their tech stack, fusing dynamic high sample rate data, low sample rate data, metadata, and digital physical models into a single ecosystem.



## DX+ AT A GLANCE

- **Integrated Measurements** – Test, measure, analyze, and report data from diverse sources and sample rates in one unified platform.
- **Database Recording** – Securely record, query, distribute, and process data using high-efficiency databases.
- **Custom Processing** – Run custom Matlab and Python scripts within the DX+ microservice pipeline
- **Advanced Analysis** – Use built-in tools for spectral, order, audio, model fit, and more.
- **One-Click Hardware Setup** – Instantly pull configurations from hardware—no duplication, no hassle.
- **User-Friendly Interface** – Quickly build test setups, dashboards, and reports with intuitive tools.
- **Fast, Interactive Plotting** – Drag-and-drop high-quality, interactive engineering diagrams.
- **Integrated Video** – Sync high-speed or schlieren video with key test data.
- **Real-Time 3D Modeling** – Visualize live data on interactive 3D physical models with color mapping and fit tools.