

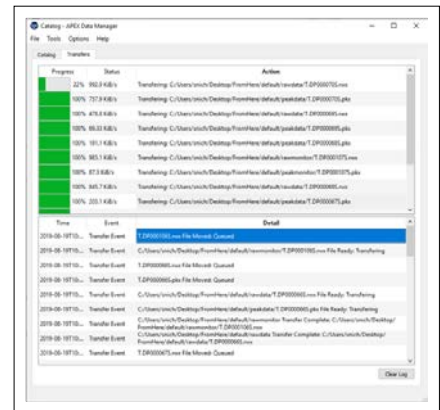


DM is a data management application which provides safe backup and directory management through a dedicated client server utility.



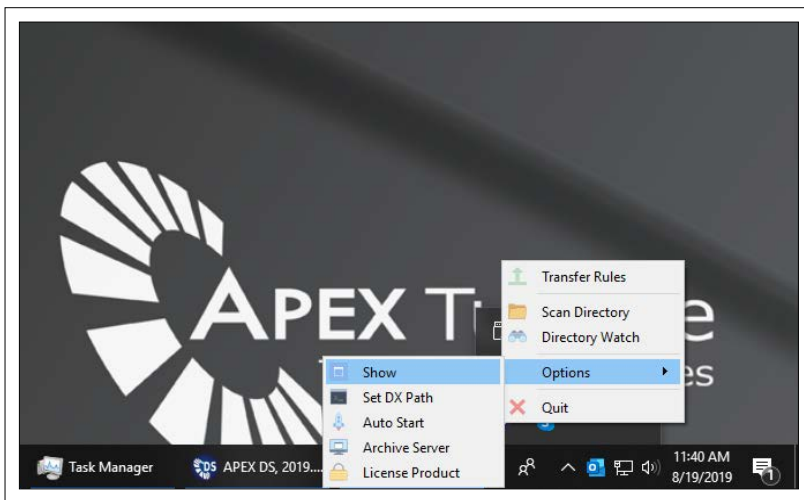
## APEX Data Management

- DM copies data from multiple data acquisition machines to any storage location on the network.
- Automatically add files to the transfer queue.
- Files can be added one or many at a time.
- View and sort queue list by several attributes.
- User is informed when disk space is too low for queued transfers.
- Schedule file transfers for any future time.
- Can be controlled remotely using published API.



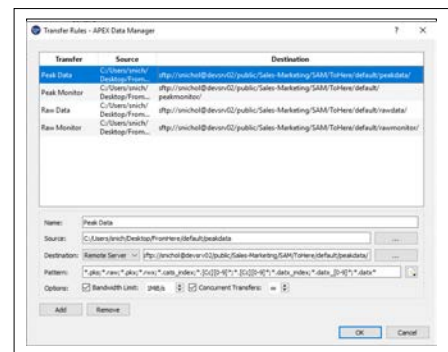
### Safe Managed Backups

Filter large data sets using APEX proprietary collection methods for "Big-Data" trending



### Works Completely In The Background, Point-to-Point

Monitors directories on network machines. Client establishes priority, queue transfers, monitors progress among storage devices.



### Complete Control Over Your Data

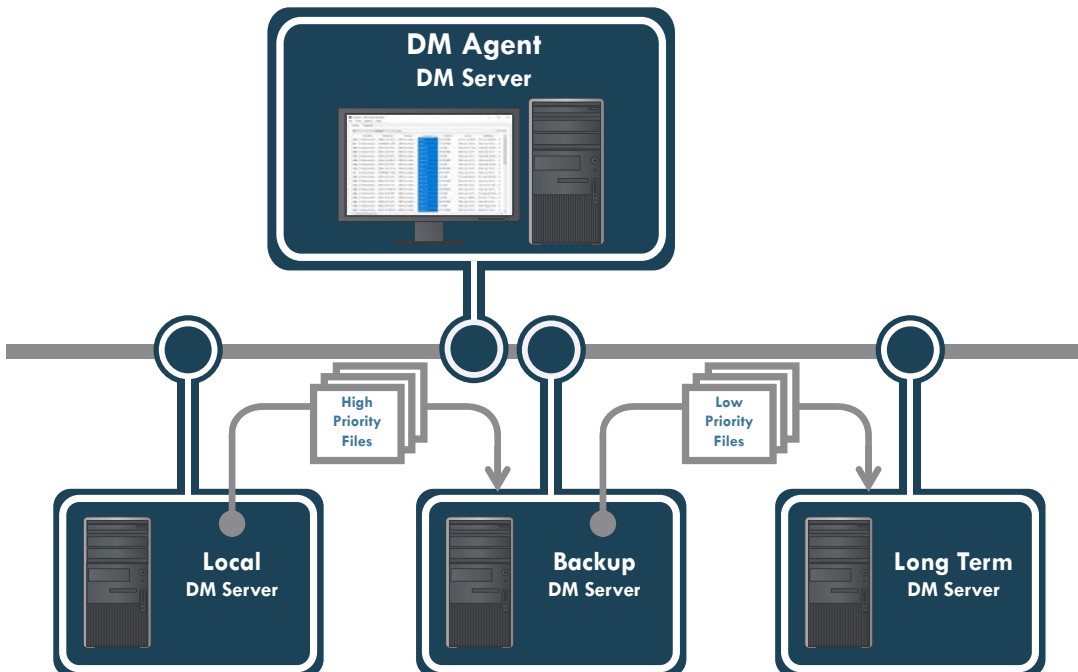
Adjust the bandwidth available to DM. If network connection is dropped DM picks up right where you left off.



# STRESS-FREE DATA MANAGEMENT

## Manage, transfer and catalog data easily, efficiently and securely.

- No database to manage
- Catalog from any Windows or network directory
- Supports all Apex DX analysis software supported file types
- Easy data mining with search & select functions based on metadata
- Log files provide data security
- Efficiently retrieve archived data from anywhere on the network
- Store, back-up and retrieve mission critical data in background
- Establish priority and queues, then monitor transfer progress
- Manual or fully automated operation



SAFE BACKUPS



POINT-TO-POINT



AUTO-TRANSFER



PRIORITIZE DATA



DATA CATALOGING



ONLINE CONTROL

